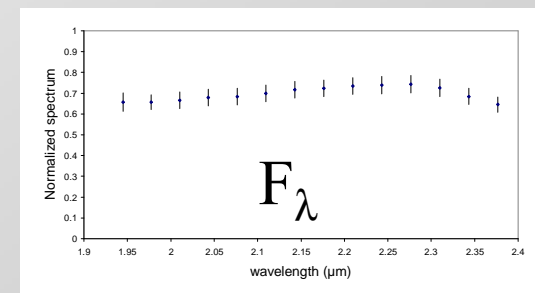
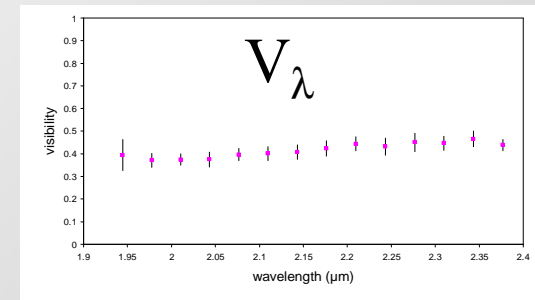
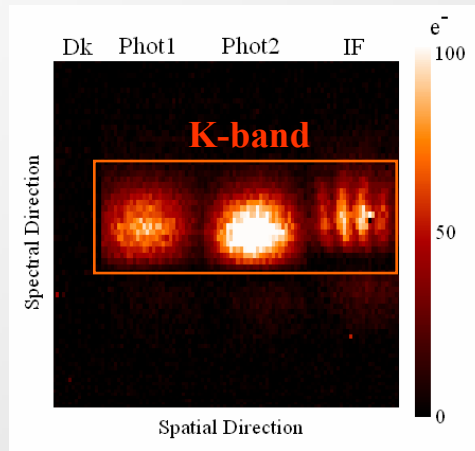
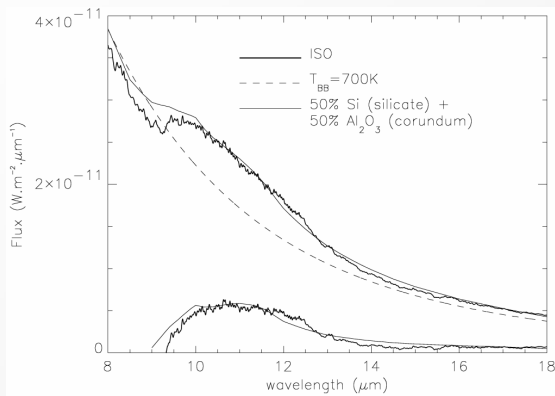


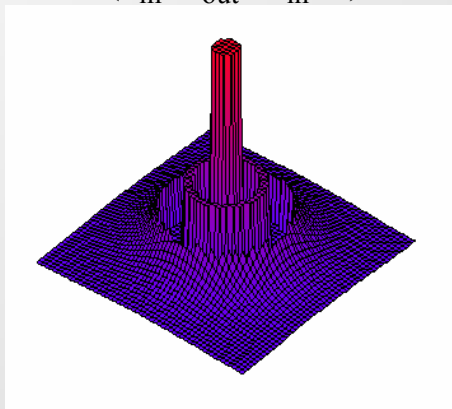
Two-layer modeling of the circumstellar environment of π^1 Gru with the VLTI-AMBER

S. Sacuto and P. Cruzalèbes (OCA – Dept. GEMINI – GRASSE)



Analytical two-thin-layer model

$(\epsilon_{\text{in}}, \epsilon_{\text{out}}, T_{\text{in}}, \tau)$



$$C_\lambda = V_\lambda \cdot F_\lambda$$

